

# LEBKUCHENFIGUR

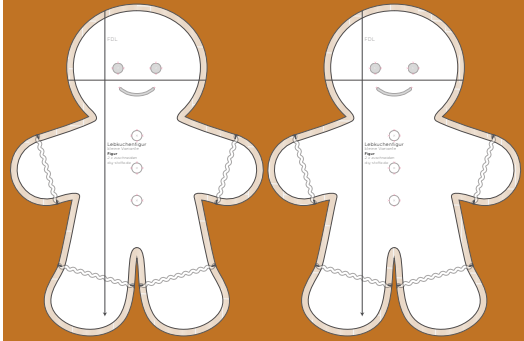


## Stoffverbrauch:

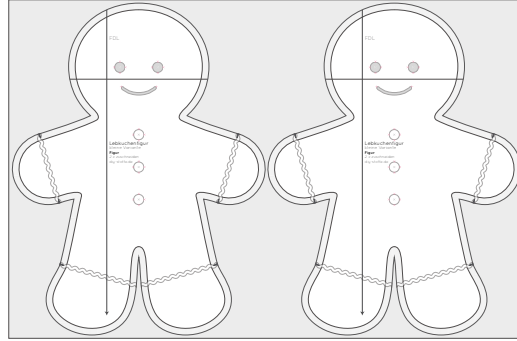
Bitte bedenkt, dass kein **Verschchnitt** und **Einlaufen der Stoffe** einberechnet ist.

## Kleine Variante

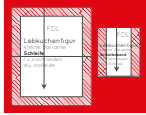
Oberstoff H-52 cm x B-79 cm



Vlies H-51 cm x B-78 cm  
(z.B. F 220 o. G 700)



Schleife H-13 cm x B-16 cm



Zackenlitze 90 cm



Füllwatte ca. 200 g



Gesicht H-3 cm x B-6 cm  
je Single Jersey Schwarz & Kreativvlies

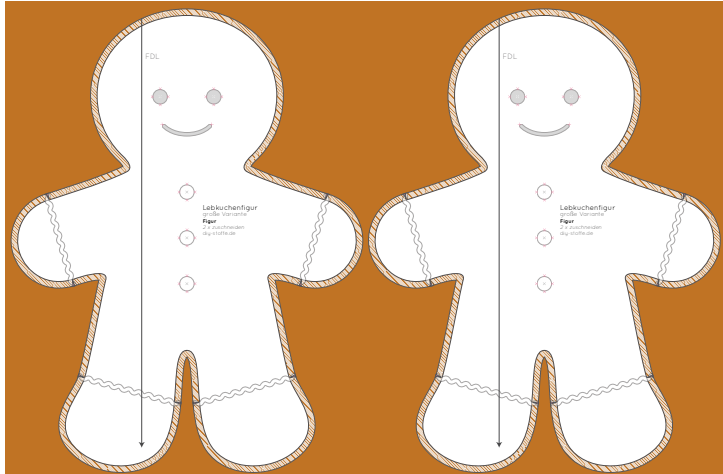


Knöpfe H-2,5 cm x B-6 cm  
je Single Jersey Weiß & Kreativvlies

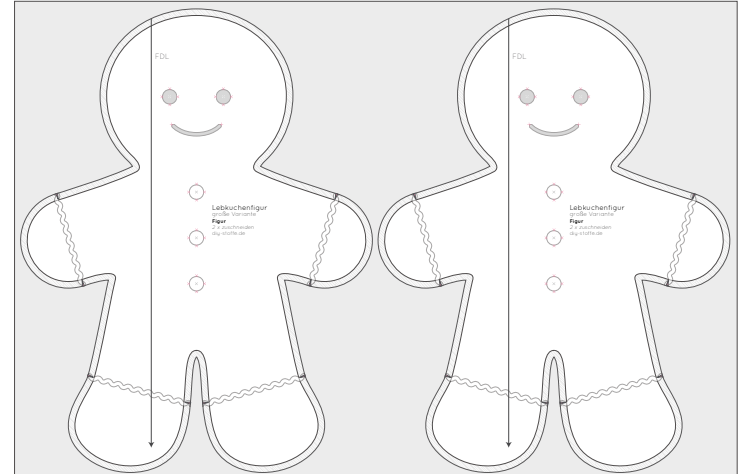


## Große Variante

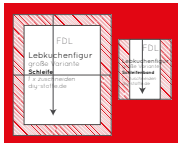
Oberstoff H-73 cm x B-110 cm



Vlies H-72 cm x B-109 cm  
(z.B. F 220 o. G 700)



Schleife H-17 cm x B-21 cm



Zackenlitze 123 cm



Füllwatte ca. 490 g



Gesicht H-4 cm x B-8 cm  
je Single Jersey Schwarz & Kreativvlies



Knöpfe H-3,5 cm x B-8 cm  
je Single Jersey Weiß & Kreativvlies

